



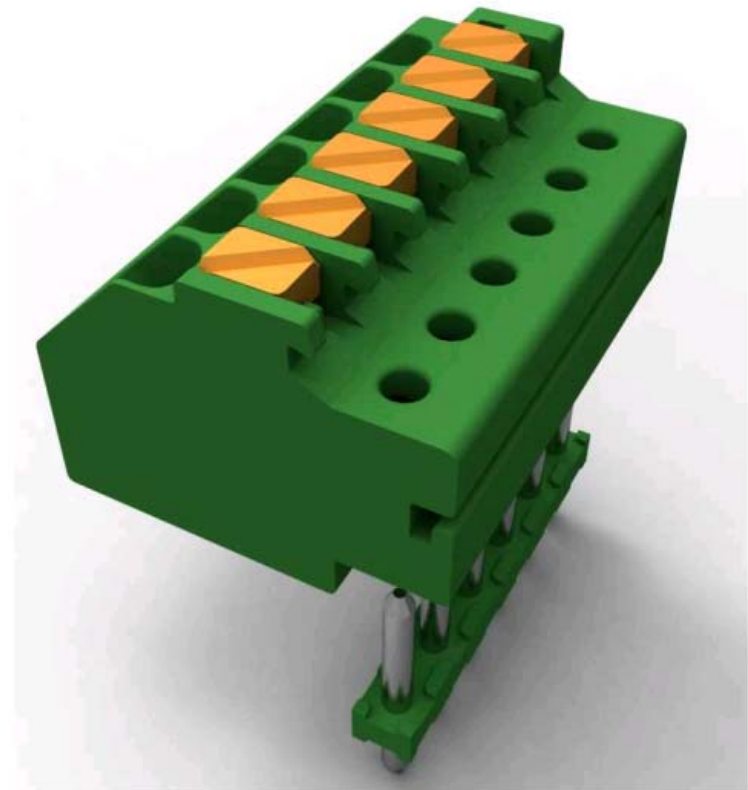
## 3.5MM Spring Type Flush Mount Plug with Unshrouded Header

January 25, 2012



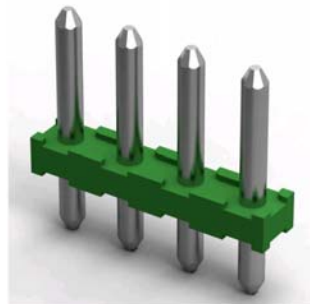
## 3.5MM Spring Type Flush Mount Plug with Mating Header Product Details

- Wire Range 20-16 AWG solid or stranded
- Current Rating 2A, 150V
- Contact resistance 15 Milliohms Max
- Header is available in two styles:
  - standard narrow base
  - wider base for stability
  - both headers are reflow compatible

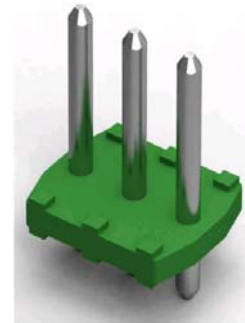


# Initial Launch Product Details

- Plug is available in 2 through 8 position
  - Part is modular therefore the color can be customized by position on high volume requests
- Header is available in standard 7mm mating pin height and in 10.6mm height
  - 7mm height has standard base and is available in 2 through 8 position sizes
  - 10.6mm height has a wider base for stability and is available in 2 through 8 positions



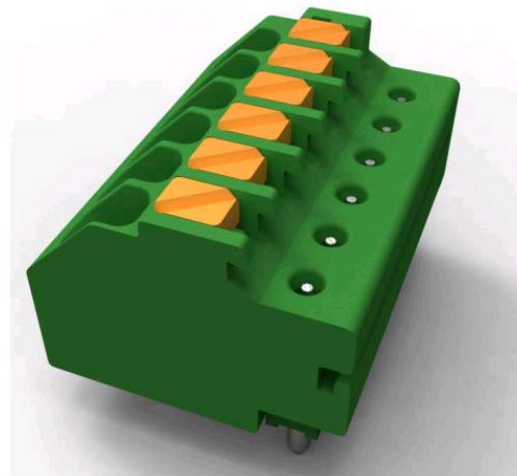
Standard 7mm Post Header



10.6mm Post Mating Header

# Features and Benefits

- **Quality** – 100% visual inspection to ensure correct product every time.
- **Customizable** – Allows for customization of color within the product to meet specialized high volume customer requests.
- **Sustainable Advantage** – reduces labor cost of installation
- **Performance** – Provides superior wire retention compared to similar spring type product



Mated Part

# Target Customers and Markets

- Automation and Drives technology
- Control boxes for HVAC and Thermostats
- Controls for TV or Radio Production
- Signal Controls

# Other Information

- Product Manager: Cathy Richard, [cathy.richard@te.com](mailto:cathy.richard@te.com)
- Product Engineer: Mike Sarver, [msarver@te.com](mailto:msarver@te.com)

© 2012 Tyco Electronics Corporation, a TE Connectivity Ltd. company. All Rights Reserved.

TE Connectivity and the TE connectivity (logo) are trademarks of the TE Connectivity Ltd. family of companies.



Information is TE Confidential & Proprietary  
Do Not Reproduce or Distribute

page 6 / January 25, 2012